

1.Product Description

Electric operation table is mainly used for the operation of various clinical departments, for head, neck, chest, peritoneal, perineum, limbs and other surgical, obstetrics and gynecology, urology, ENT, brain surgery and other surgical needs. Table height adjustable, left and right tilt, trendelenburg and reversed-trendelenburg, table translation all by electric to achieve through the button operation.

The operating table is designed according to ergonomic principles. It consists of flat, pedestal, electrical control system, supporting parts. The supporting parts mainly include shoulder support, arm rest, leg support and support frame. All using low-voltage DC motor drive, safe and reliable.

2.The Scope of Application

This product is used in kinds of clinical surgery.

3.The Main Technical Parameters

Flat size:2000 mm×480 mm(back rest,seat plate,leg plat all set level)

Height adjustable:750mm~1000mm

Reversed-trendelenburg:≥ 22°

Trendelenburg:≥ 25°

Left and right tilt: ≥ 20

Translation: ≥ 295mm

Head Rest up folding: ≥ 45°

Head rest down folding:≥ 90°

Back rest up folding:≥ 70°

Back rest down folding:≥ 35°

Leg rest down folding:≥ 90°

Leg rest open:≥ 90°

Kidney bridge elevation:≥ 80mm

Power:220V±22V

Frequency:50Hz±1Hz

Input: 600VA

Weight:200kg

Work:short-term load continuous operation

Device class: Non-AP/APG device

Enclosure rating: IPX4

Device security category:Class I Type B

Fuse model and specifications:F5AL250V (Φ5×20mm)

4.Installation and Use Method

1.Acceptance

Open the packing box and lift the operating table in the appropriate way and place it on a preset flat surface.

Remove the air cushion film on the outer cover of the operating table, open the accessories box, remove the packing list in the packing box, and check the packing list one by one. If you have any questions, please contact the dealer immediately.

2.A106-2-type electro-hydraulic operating table tips

In order to ensure your better use after you purchase this product,we specifically states:

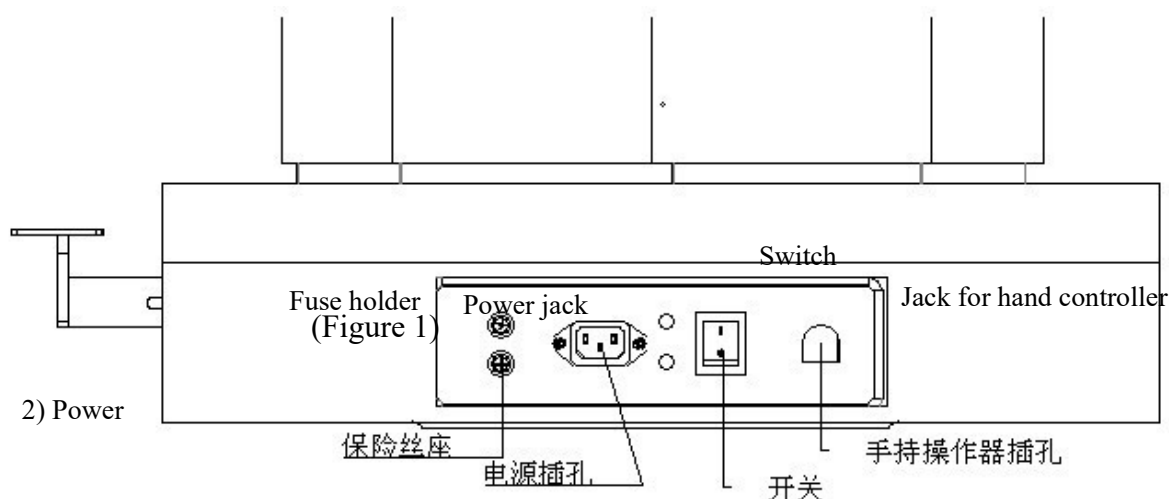
- 1) This type of electric operating table drive by using low-voltage direct current hydraulic pump.
- 2) Turn off the power when not use.
- 3) operating table must be used in anti-static floor.
- 4) operating table pad using polyurethane one-time adsorption molding, modeling stability and has anti-static properties.
- 5) Please read this instruction carefully before use.
- 6) Before using this product,please follow this manual in twelve, the maintenance of the method for disinfection.
- 7) This product's packaging materials are all 100% recovery considering the impact on the environment.
★ wood, ★ steel, ★ polyethylene film bag, ★ polyethylene air cushion film
Please pack the materials and waste collected and sent to the designated collection points.
- 8)Please follow the local health and epidemic prevention laws for the scrap disposal of the product.

3.Normal working conditions

- 1) Power: 220±22VAC
- 2) Frequency:50Hz±1Hz
- 3) Input:600VA
- 4) Atmospheric pressure:70kPa~106kPa
- 5) Temperature:5°~ 40°C
- 6) Relative humidity:≤80%

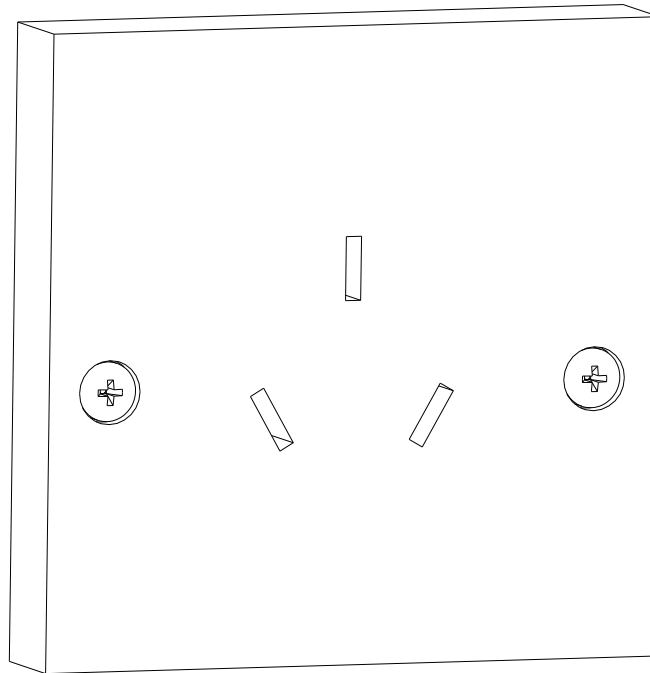
4.Preparing for installation

- 1)Schematic diagram of power supply (see Figure 1)



Power supply must use 220V (5A or above) socket as standard configuration, and can not use the same socket with other electric appliances and instruments.(see Figure 2)

Figure 2



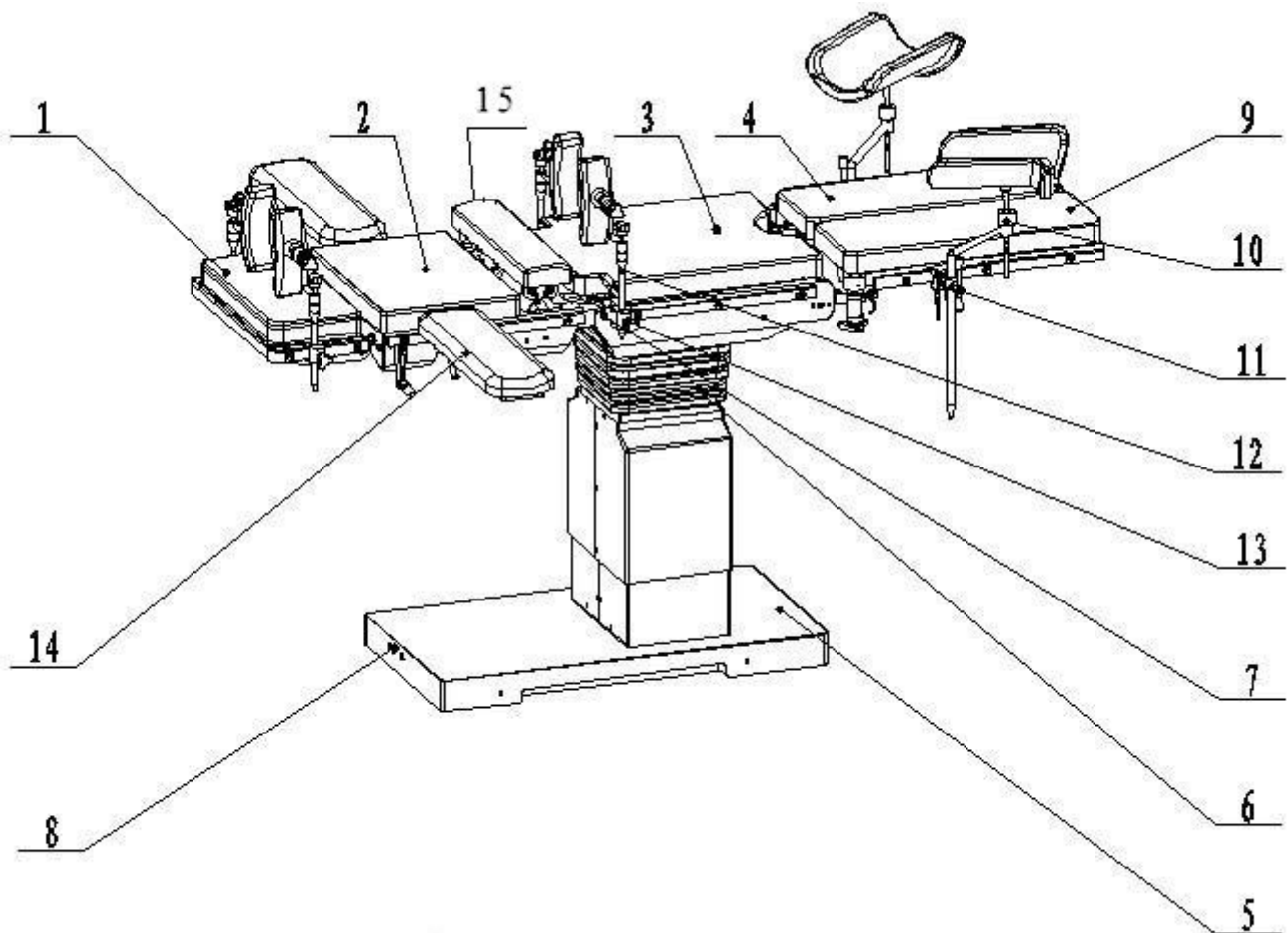
3)Landing

Landing must be reliably connected.

In order to prevent the electric shock accident in case of electric leakage, please make sure that the socket landing is firmly and reliably connected before the equipment installation and using,the landing can not be connected to the following objects:

★ heating pipe, ★ gas pipe, ★ water pipe, ★ lightning rod, ★ telephone line

4) Name of each component of A106-2 electric hydraulic operating table (see Figure 3)



(Figure 3)

1,head plate 2,back plate 3,seat plate 4,leg plate(left) 5,Base 6,Sheath 7,the back plate connection screw
8, plugs and switches 9, leg plate(right) 10, leg support 11, locking device 12, supporting frame

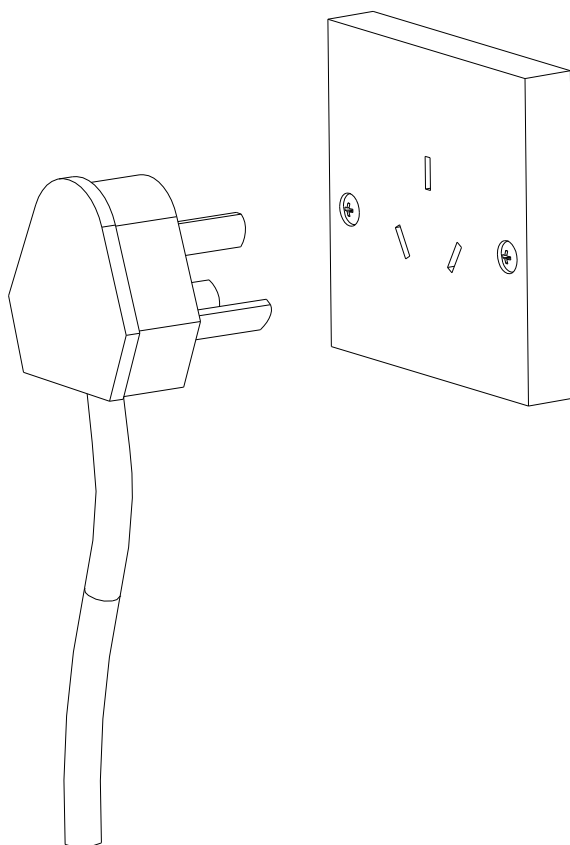
* the company has the right to improve the products, the products are subject to the actual sample, if any changes are subject to change without notice.

5,Installation steps

Take all of the accessories in the box,see packing list before installation.

6.Shakedown test

1) insert the power plug into the power supply socket (see Figure 4).



(Figure 4)

2) turn on the main power switch (green indicator light), indicating that the machine has been in standby mode after self inspection (see Figure 5).

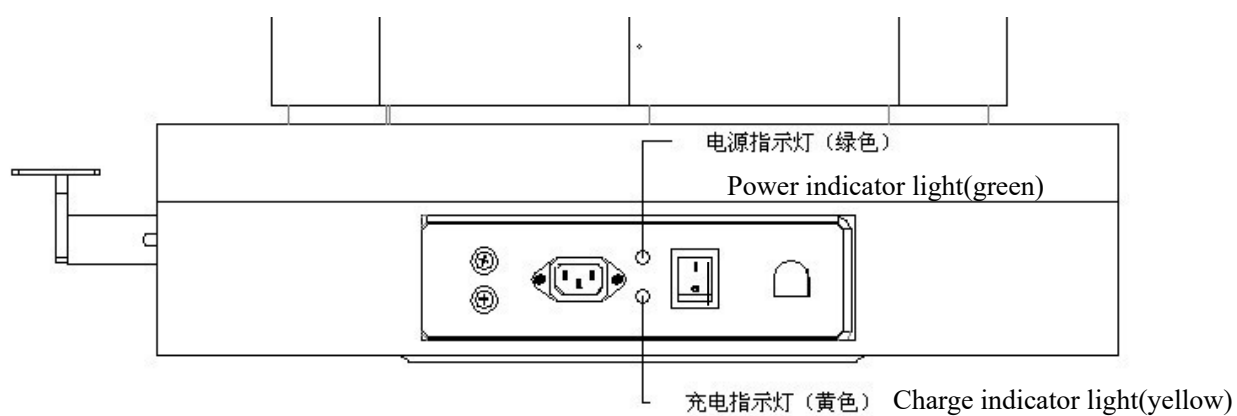
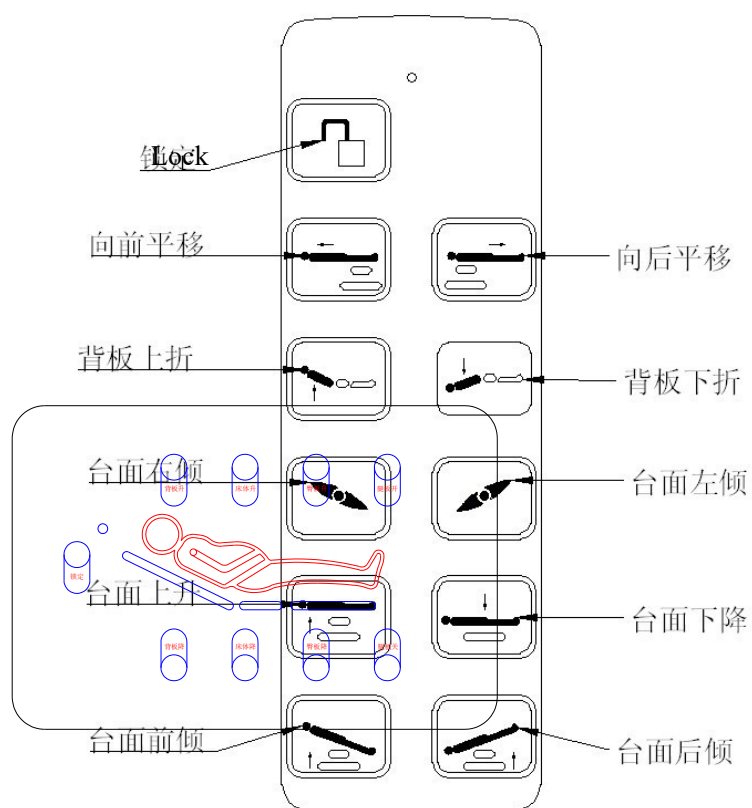


Figure 5

3) hand control panel (see Figure 6)



Forward translation

	Backward translation
Back section raised	Back section fold down
Right deviation	Left deviation
Flat up	Flat down
Reversed trendelenburg	Trendelenburg

(Figure 6)

5.Auxiliary power supply system

The operating table is equipped with auxiliary power supply system in power failure or power supply is suddenly broken, the internal circuit will automatically switch with internal auxiliary power supply in order to ensure the normal operation of the operating table. In the closed after the power switch off power and internal auxiliary power supply.

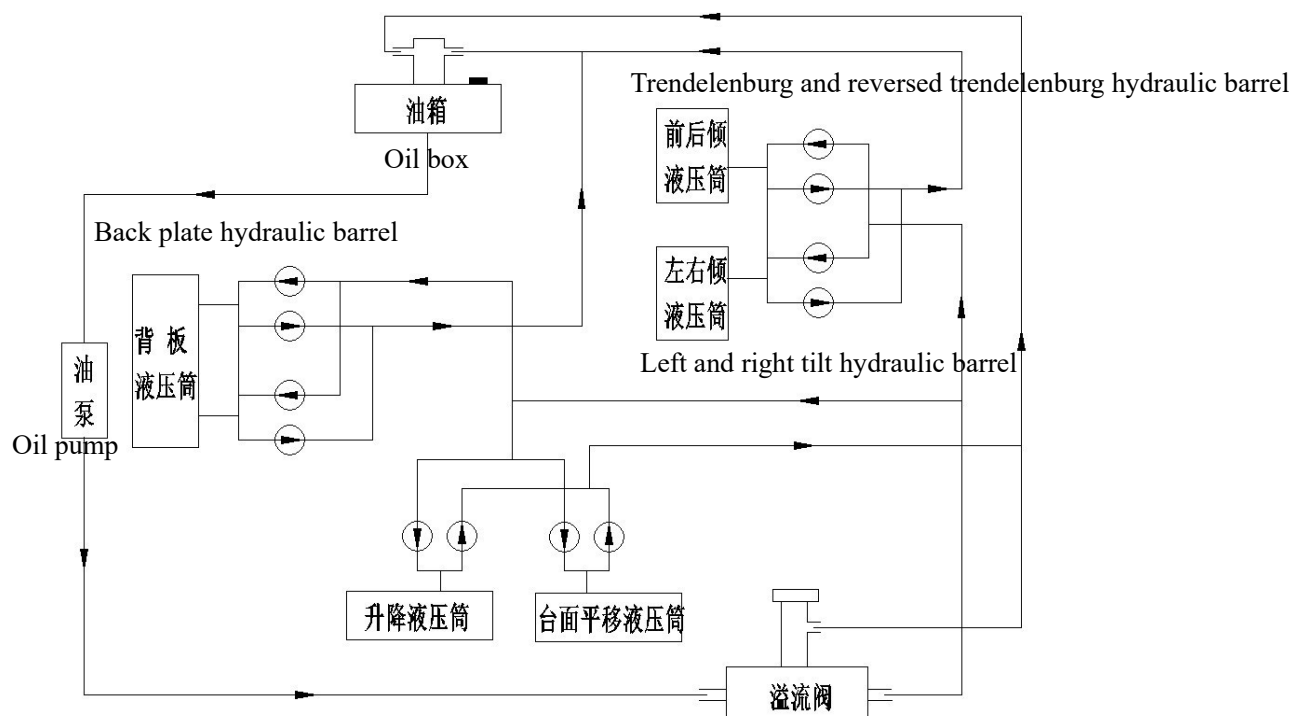
Please pay attention to the following items in the use of the auxiliary power system:

- 1, When there is a doubt that the external protection of the wire in the installation or the integrity of its wiring , please use the internal power supply.
- 2, It should be usually based on the external power supply, internal auxiliary power supply subsidiary, timely attention to internal battery supply electric power so as not to affect the next use but also conducive to prolong the service life of the battery should be used within the auxiliary power supply.
- 3, the auxiliary power supply system will automatically add power to internal battery in the external power supply under normal conditions, when charging (yellow charging indicator), full power will automatically stop charging (charging the yellow light is off).
- 4, should avoid the use of internal auxiliary power supply in the high temperature environment, so as to avoid premature aging of the battery.
- 5, when using the auxiliary power supply, please pay attention to the "short time load" can not be used to avoid damage to the internal battery.
- 6, it is recommended to check the integrity of the internal power supply every month (artificially cut off the external power supply system with internal power supply and load to test the internal power supply system in good condition).
- 7, auxiliary power can generally be used for 3 years, if find the auxiliary power supply running time is getting shorter and shorter, please purchase the auxiliary power supply in time from our company
- 8, the technical personnel who is not be confirmed by manufacturers shall not replace the internal battery to avoid accidents.
- 9, the internal battery specifications: 2 12V/7Ah x

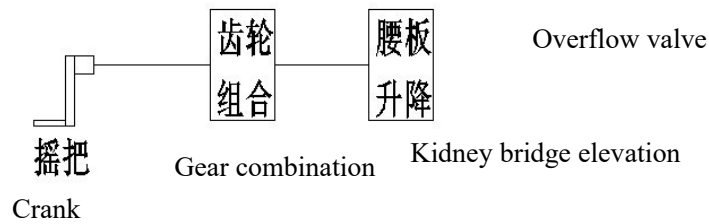
The red end of the battery is positive, and the black end is negative.

6. Working principle

Back lifting, table lifting and translation, reversed trendelenburg and trendelenburg, left to right tilt of the electric hydraulic operating table are realized by the oil from the oil box to the oil pipe by pump, solenoid valve control circuit on-off, using hydraulic pressure to promote the movement of the piston in the hydraulic cylinder. Kidney bridge lifting is realized by human manipulation combination of crank drive gear. Leg plate movement through the human manipulation of locking mechanism to achieve, Turn head plate through human manipulation ratchet mechanism to achieve. The operating table mobile and fixed by foot switch control casters to achieve.



Height adjustable oil pump Flat translation hydraulic barrel



7. the security aspects of attention

- ★ Before use, please read the safety precautions carefully and use it correctly.
- ★ For the safe use of equipment to prevent you and others from danger and damage, expected of the possible problems in the wrong use and classify the extent of damage. In short, you must comply with the contents of the security.

1. Warnings

Ignore the warning, the wrong use of the operation, may cause serious injury or even life-threatening!

The plug is used alone

Use a 220V (5A or more) AC outlet alone. Use other instruments together will cause the abnormal heat or even fire on the socket.

The power plug is inserted firmly

Make sure the plug is fully inserted into the socket, and to ensure that the conductive contacts in the socket and a solid contact does not occur loosening and poor contact, poor contact may cause the device working poor, failure or even a fire.

Unplug the power when not in use for a long time

Please cut off the power switch, unplug the power plug when not in use for a long time. Otherwise, it is easy to cause accident or cause leakage fire caused by deterioration of insulation

Caution damage to the power cord or the power plug

Do not use if the power cord or power plug is damaged or the plug is loose. Otherwise easy to cause electric shock and fire.

Unplug the power cord

When unplugging the power cord, do not pull on the power cord. Unplug it from the top of the handheld power plug. It is easy to damage the power cord when you pull the wire and will cause electric shock and fire.

Grounding wire must be really connected

The connection of the grounding wire must be consulted with the professional staff, the socket should be used with the grounding terminal, if not, it is easy to cause the electric shock when the equipment is not stable or leakage.

Attention to the placement of the operating table

Before working and during working, please pay special attention to the surrounding should have no body, hand, foot, examination or surgical instruments and other obstacles.

Pay attention to the surrounding when the operating table is working

Operating table must be stable, firmly placed on the ground. If you set the tilt on the ground more than 5 °, the operating table is easy to dum

Attention to the movement of the operating table

The operating table in the patients can not do the side lying and side sit back, buttocks and legs turn over plate folding movement, otherwise easily lead to grip the injured patients.

In addition to qualified technical service personnel, absolutely can't removed, repair the operating table

It is easy to get electric shock when demolition, repair, or repair is not complete and easy to cause fire, result in abnormal movements, so that the human body is injured.

Please do not flush the operating table with water.

The operating table is electrical equipment, please do not wash with water. Otherwise there will be an accident or an electric shock.

Pay attention to the use of high frequency surgical equipment

In the use of high frequency surgical equipment, to prevent the metal parts of patients and bed contact, lest burns.

*Safe use of self locking gas spring

The self locking type air spring used in the product, do not disassemble by yourself in any case , otherwise, it is easy to cause danger :Gas spring normal working condition: -80 C -30 C

2.matters needing attention

1) the operating table operator must undergo professional training, including but not limited to the patient's protective measures, the use of the method, the safety of medical personnel operating measures and protection methods, etc.

2) Note the following when installing the operating table

- A. Install in the moisture-proof place.
- B. Avoid installation in places where temperature, humidity, sunlight are strong and dusty.
- C. During Tilt, vibration, shock (including handling) status, keep the operating table in a safe state.
- D. Avoid installation near chemical, corrosive and gas.
- E. Note the frequency of the power supply and the allowable current value (power consumption).
- F. Connect the ground wire correctly and firmly.
- G. Provide a brief operating instructions for the emergency operating table in a prominent position in the operating room.

3) Precautions before using the operating table

- A. Check the contact of the switch, polarity is good., to confirm the operating table can be used normally.
- B. Verify that the ground wire is fully connected.
- C. Verify that all wires are secure and properly connected.
- D. Combined with other operating tables can lead to false diagnosis, causing danger, please pay special attention.
- E. Verify that all removable accessories are securely installed.
- F. Do not let patient's body directly contact with the mattress during operation, isolate with material such as medical non-woven fabrics.

4) When using the operating table, please pay attention to the following items

- A. Absolutely ensure that the operating table and patients with no abnormalities when using the operating table.
- B. Found that the operating table or patients with abnormal phenomenon, in order to ensure the safety of patients, should take appropriate measures to stop the operating table.
- C. Be careful not to let the patient touch the operating area of the operating table.
- D. The Patients are not allowed to up and down the operating table when the operating table is moving.
- E. Avoid install or use the operating table in the environment of strong electromagnetic interference, so as to avoid malfunction or malfunction caused by operating table accident.

5) operating table should pay attention to the following matters

- A. The back plate, seat plate and leg plate should be in a horizon, the bed body of the operating table should be moved to the most inside and down to the appropriate height.
- B. Cut off the power
- C. If you need to remove the power cord, you must pull the power cord plug part, not pull the power cord.
- D. Accessories, wires, etc. need to be preserved after cleaning up.
- E. In order to be able to use the operating table for the next time, it must be cleaned and disinfected.

6) When failure happens, do not casually demolished, ask professionals to repair.

7) You Must Disconnect the power before replacing the fuse, reply it with the same type of fuse (F5A250V) .

8) Do not modify the operating table.

9) machines and exposed parts should be regularly inspected and maintained.

10) If you don't use the machine for a long time, you must make sure that the machine is safe and correct before use.

11) other daily matters

A) after a day's work, the power must be cut off.

B) All motors of this machine shall be operated in batch mode, stop for ten minutes after two minutes of continuous operation.


C) The operation of the power switch must be carried out by hand.

D) Do not place items on power cord, hand control device. Otherwise, it is easy to cause damage to the wire, causing a short circuit, open circuit, easy to cause electric shock and fire.

E) Please pay special attention not to depress wrong control pedal when operating.

F) Please be sure to cut off the power supply when replacing the cover cloth.

No.	Graphic		Meaning
1	battery main switch	○	switch off (main power)
			switch on (main power)
2	⊕		protective grounding
3	⚡		B type applied part

4		Internal Battery
---	---	------------------

8.Graphics and symbols

9.Equipment external marking

	Content	Mark
1	Manufacturer	SAIKANG MEDICAL
2	Type	Electro-hydraulic type
3	Power	220V±22V
4	Power supply frequency	50Hz±1Hz
5	Input power	600VA
6	Classify	I classify B type
7	outer covering protection rank	IPX4
8	Operating mode	Short-term load continuous operation
9	Fuse	F5AL250V (Φ5 X 20mm)

10. Maintenance

- 1) Be sure to turn off the power before cleaning, disinfection, maintenance, maintenance.
- 2) The water will cause the failure or even an electric shock of the power plug, foot control plug, please use a dry soft cloth to wipe the water.
- 3) Exposed metal parts will rust in contact with water, wipe the water with a soft, dry cloth.
- 4) Please use dry soft cloth to wipe plastic, leather and other coating part.

- 5) Stains and grease, diluted with water and diluted neutral detergent cloth, wiping after wring dry .
- 6) Do not use banana oil, gasoline, kerosene and other volatile chemical solvents and wax, sponge, brush containing contains abrasives.
- 7) operating table can use ultraviolet radiation or formalin fumigation method for disinfection.

11.Transport and storage

Transportation and storage conditions:

- A) Ambient temperature: -40 °C ~ +55 °C.
- B) relative humidity: $\leq 95\%$.
- C) Atmospheric pressure: 50 kPa to 106 kPa.

12 .After-sales service

- 1) Please take good care of the documents and invoices of this equipment, these material need to be provided to our company for the equipment warranty and maintenance.
- 2) Please fill in the "User Information Feedback Card" according to the requirements on the card and send it to our company so that our company can communicate with you in time and provide you with accurate and efficient technical support and maintenance services.
- 3) This product from the date of sale, where the instructions provided by the correct installation and use of the failure or damage occurred, with "product warranty card" and invoices for one year free warranty and lifetime maintenance services.
- 4) When the machine breaks down, please cut off the power, unplug the power plug, and contact the dealer or manufacturer immediately.
- 5) To avoid danger, non-professional maintenance personnel do not repair, modify this equipment.